



DEPARTMENT OF REGULATORY AND ECONOMIC RESOURCES (RER)
BOARD AND CODE ADMINISTRATION DIVISION

MIAMI-DADE COUNTY
PRODUCT CONTROL SECTION
11805 SW 26 Street, Room 208
Miami, Florida 33175-2474
T (786) 315-2590 F (786) 315-2599
www.miamidade.gov/economy

NOTICE OF ACCEPTANCE (NOA)

Isaiah Industries, Inc.
8510 Industry Park Drive
Piqua, OH 45356

SCOPE:

This NOA is being issued under the applicable rules and regulations governing the use of construction materials. The documentation submitted has been reviewed and accepted by Miami-Dade County RER - Product Control Section to be used in Miami Dade County and other areas where allowed by the Authority Having Jurisdiction (AHJ).

This NOA shall not be valid after the expiration date stated below. The Miami-Dade County Product Control Section (In Miami Dade County) and/or the AHJ (in areas other than Miami Dade County) reserve the right to have this product or material tested for quality assurance purposes. If this product or material fails to perform in the accepted manner, the manufacturer will incur the expense of such testing and the AHJ may immediately revoke, modify, or suspend the use of such product or material within their jurisdiction. RER reserves the right to revoke this acceptance, if it is determined by Miami-Dade County Product Control Section that this product or material fails to meet the requirements of the applicable building code.

This product is approved as described herein, and has been designed to comply with the Florida Building Code including the High Velocity Hurricane Zone of the Florida Building Code.

DESCRIPTION: Grande Tile Roof Panel

LABELING: Each unit shall bear a permanent label with the manufacturer's name or logo, city, state and following statement: "Miami-Dade County Product Control Approved", unless otherwise noted herein.


RENEWAL of this NOA shall be considered after a renewal application has been filed and there has been no change in the applicable building code negatively affecting the performance of this product.

TERMINATION of this NOA will occur after the expiration date or if there has been a revision or change in the materials, use, and/or manufacture of the product or process. Misuse of this NOA as an endorsement of any product, for sales, advertising or any other purposes shall automatically terminate this NOA. Failure to comply with any section of this NOA shall be cause for termination and removal of NOA.

ADVERTISEMENT: The NOA number preceded by the words Miami-Dade County, Florida, and followed by the expiration date may be displayed in advertising literature. If any portion of the NOA is displayed, then it shall be done in its entirety.

INSPECTION: A copy of this entire NOA shall be provided to the user by the manufacturer or its distributors and shall be available for inspection at the job site at the request of the Building Official.

This NOA renews NOA 13-1015.11 and consists of pages 1 through 6.

The submitted documentation was reviewed by *Freddy Semino* 



NOA No.: 19-0220.09
Expiration Date: 04/03/24
Approval Date: 04/25/19
Page 1 of 6

ROOFING ASSEMBLY APPROVAL:

Category: Roofing
Sub-Category: Non-Structural Metal Roofing
Material: Aluminum
Deck Type: Wood
Maximum Design Pressure: -93.65 psf.

TRADE NAMES OF PRODUCTS MANUFACTURED OR LABELED BY APPLICANT:

<u>Product</u>	<u>Dimensions</u>	<u>Test Specifications</u>	<u>Product Description</u>
Grande Tile Roof Panel <i>Manufacturing Location # 1</i>	W= 44 1/8" L = 33 3/16" Thickness min.: 0.032"	TAS 125	Preformed aluminum metal roof panel with Kynar/Hylar coating.

TRADE NAMES OF PRODUCTS MANUFACTURED BY OTHERS:

<u>Product</u>	<u>Dimensions</u>	<u>Test Specifications</u>	<u>Product Description</u>	<u>Manufacturer</u>
RoofAquaGuard UDLX	60" x 200' rolls	ASTM D226 Type I & II	A polymer coated, woven synthetic underlayment comprised of spunbound polypropylene and polypropylene netting with anti-slip coatings on both sides.	Nordic Waterproofing, Inc. (With Current Approved NOA)

MANUFACTURING LOCATION:

1. Piqua, OH.

EVIDENCE SUBMITTED:

<u>Test Agency</u>	<u>Test Identifier</u>	<u>Test Name/Report</u>	<u>Date</u>
Farabaugh Engineering and Testing	T233-13	TAS 125	03/17/14
	T232-13	TAS 100	02/10/14
Applied Research Laboratories	29912	ASTM B117	07/14/99
		ASTM G26	



NOA No.: 19-0220.09
 Expiration Date: 04/03/24
 Approval Date: 04/25/19
 Page 2 of 6

APPROVED ASSEMBLIES:

System A: Grande Tile Roof Panel
Deck Type: Wood, Non-insulated
Deck Description: New Construction ¹⁹/₃₂" or greater plywood or wood plank.
Slope Range: 2:12 or greater
Maximum Uplift Pressure: -93.65 psf. (See General Limitation #2)

Deck Attachment: Deck shall be attached in accordance with applicable Building Code, but in no case shall it be less than 8d corrosion resistant screws spaced 6" o.c. In reroofing, where the deck is less than ¹⁹/₃₂" thick (Minimum ¹⁵/₃₂") the above attachment method must be in addition to existing attachment.

Underlayment: RoofAquaGuard UDLX polypropylene underlayment. Underlayment shall be fastened with approved corrosion resistant tin-caps and #8d x 1 1/2" corrosion resistant annular ring-shank nails spaced 12" over the entire roof. Extra full width piece of underlayment ran the full length of valleys.

Fire Barrier: Any approved fire barrier having a current NOA. Refer to a current fire directory listing for fire ratings of this roofing system assembly as well as the location of the fire barrier within the assembly. See Limitation # 1.

Valleys: Valley construction shall be in compliance with Roofing Application Standard RAS 133 and with Isaiah Industries Inc.'s current published installation instructions.

Metal Panels and Accessories: Install the "Grand Tile Roof Panel" and accessories in compliance with Isaiah Industries, Inc.'s current published installation instructions and details. Flashings, penetrations, valley construction and other details shall be constructed in compliance with the minimum requirements provided in Roofing Application Standard RAS 133.

Panels shall be installed from right to left and lap with each other. The panels shall be fastened using corrosion resistant #9-15 x 2 1/2" stainless steel screws with ⁷/₁₆" stainless steel bonded washers at the panel laps, and #9-15 x 1 1/2" stainless steel screws with ⁷/₁₆" stainless steel bonded washers at the panel field, and located at a maximum spacing as shown in 'Table A'.

TABLE A MAXIMUM DESIGN PRESSURES		
Roof Areas	Field	Perimeter and Corner ¹
Maximum Design Pressures	-66.1 psf	-93.65 psf
Maximum Screw Spacing	13.875" at panel lap and every other low cell ²	13.875" At panel lap and every low cell ³
1. Extrapolation shall not be allowed		
2. Every other panel low cell is spaced at 13.78" o.c.		
3. Every panel low cell is spaced at 6.89" o.c.		



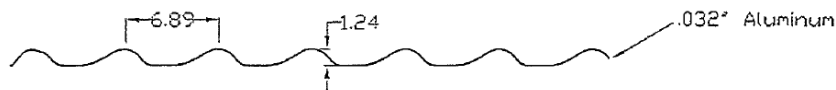
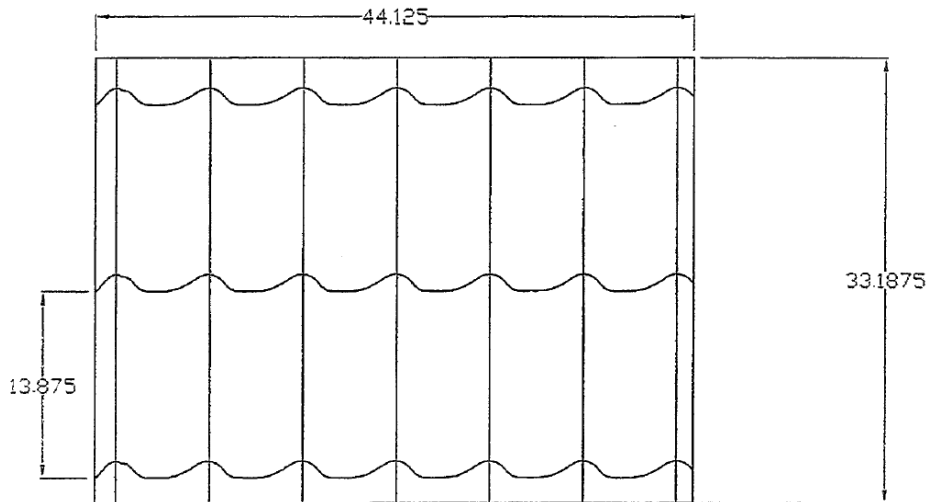
SYSTEM LIMITATIONS

- 1. Fire classification is not part of this acceptance; refer to a current Approved Roofing Materials Directory for fire ratings of this product.
- 2. The maximum designed pressure listed herein shall be applicable to all roof pressure zones (i.e. field, perimeters, and corners). Neither rational analysis, nor extrapolation shall be permitted for enhanced fastening at enhanced pressure zones (i.e. perimeters, extended corners and corners).
- 3. All panels shall be permanently labeled with the manufacturer's name and/or logo, city and state of manufacturing facility, and the following statement: "Miami-Dade County Product Control Approved" or with the Miami-Dade County Product Control Seal as seen below.



- 4. All products listed herein shall have a quality assurance audit in accordance with the Florida Building Code and Rule 61G20-3 of the Florida Administrative Code.

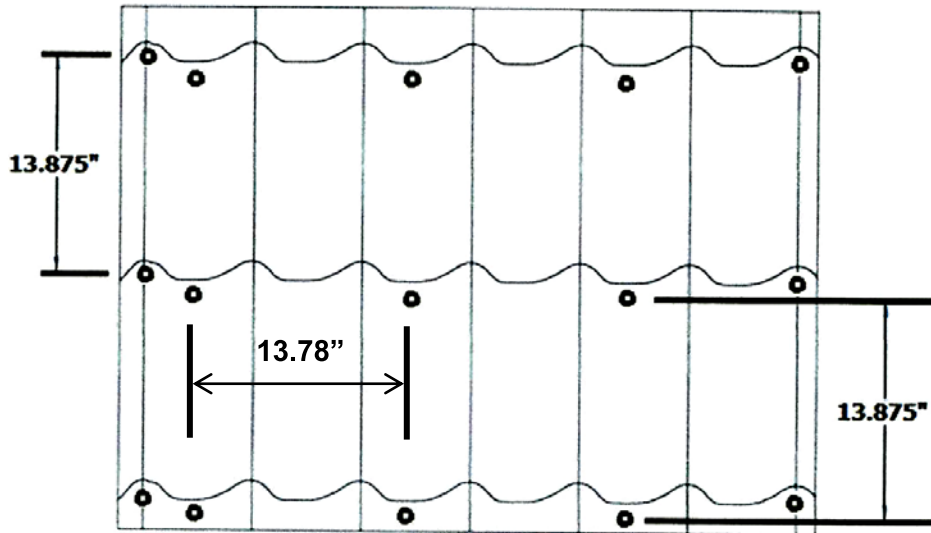
PROFILE DRAWING



GRANDE TILE ROOF PANEL

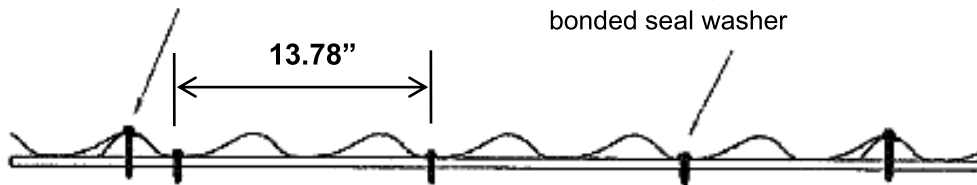


DETAIL
GRANDE TILE ROOF PANEL
FIELD CONDITION

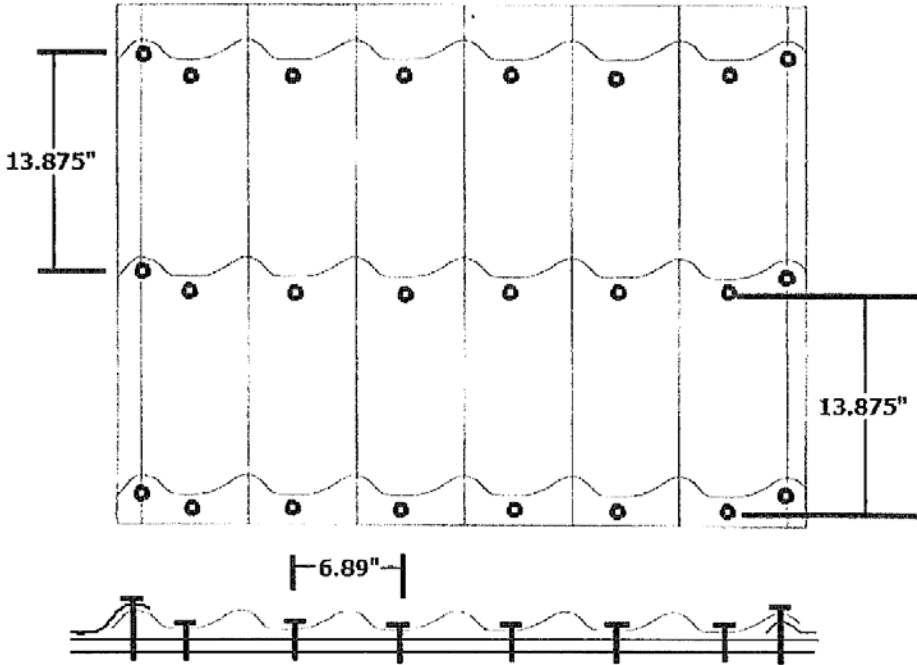


#9-15 x 2 1/2" stainless steel
screw with 7/16" stainless steel
bonded seal washer

#9-15 x 1 1/2" stainless steel
screw with 7/16" stainless steel
bonded seal washer

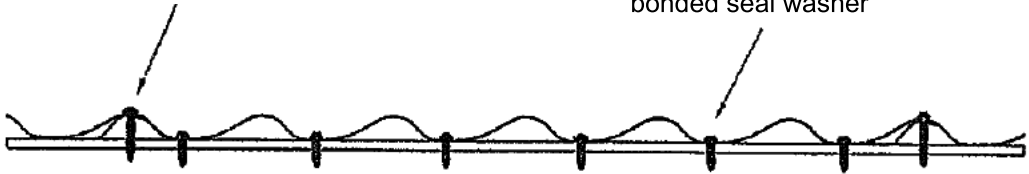


DETAIL
GRANDE TILE ROOF PANEL
PERIMETER & CORNER CONDITION



#9-15 x 2 1/2" stainless steel screw with 7/16" stainless steel bonded seal washer

#9-15 x 1 1/2" stainless steel screw with 7/16" stainless steel bonded seal washer



END OF THIS ACCEPTANCE



NOA No.: 19-0220.09
 Expiration Date: 04/03/24
 Approval Date: 04/25/19
 Page 6 of 6